



U.S. Philatelic Classics Society

Volume: 58 Number: 2 Year: 2006 Chronicle: 210

Article: Display Advertisement

Advertiser: Shreves Philatelic Galleries, Inc.

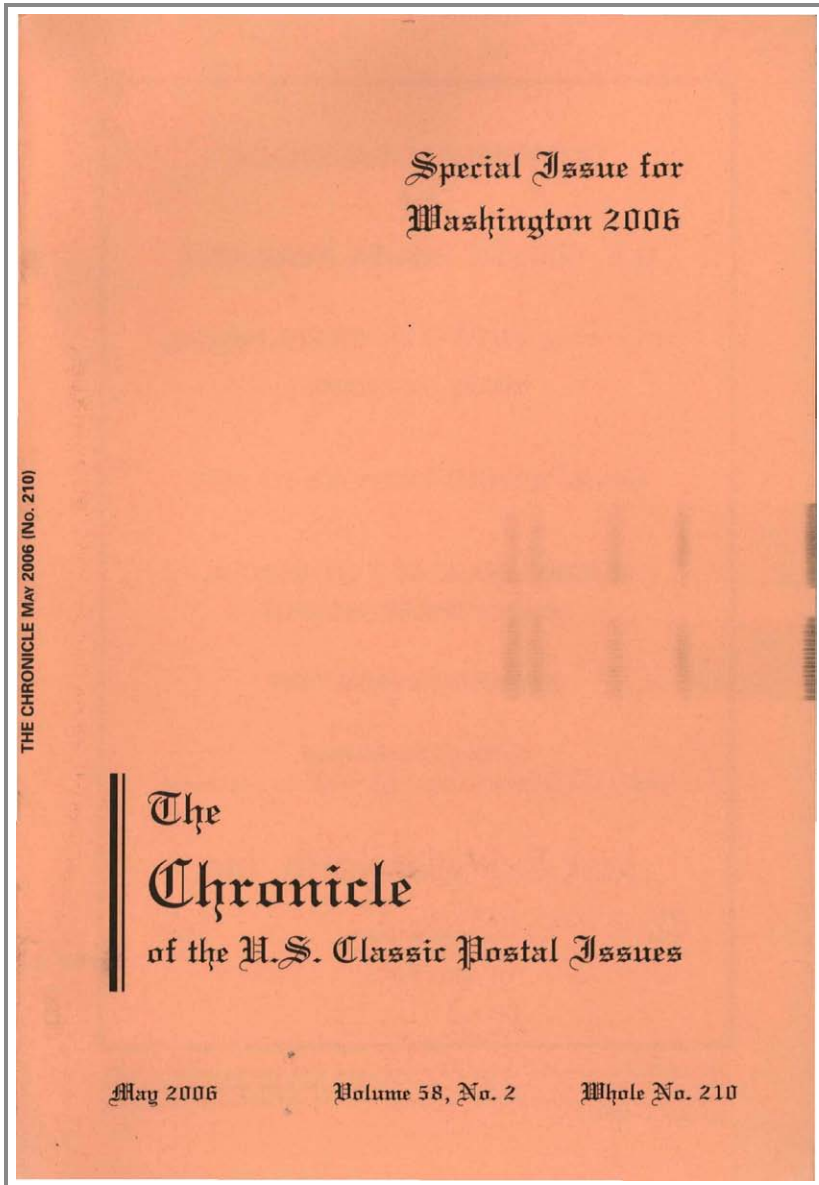


Table Of Contents

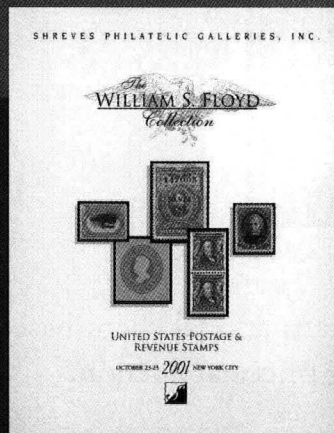
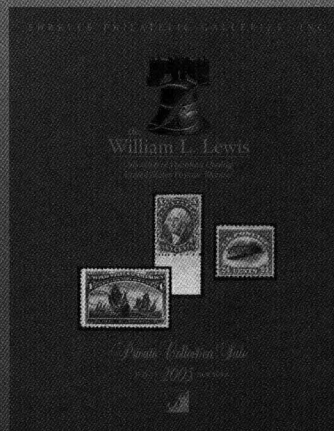
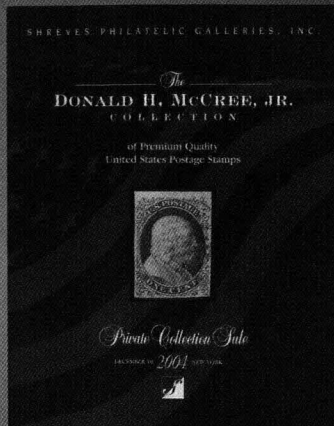
items marked with * cannot be viewed as an individual PDF document

[Click here to view the entire Volume: 58 No: 2 Chronicle: 210](#)

	<u>Starting Page</u>
Front Cover (1 page)	Front Cover
Display Advertisement (1 page) Advertiser: Jack E. Molesworth, Inc.	Inside Front Cover
Display Advertisement (1 page) Advertiser: Shreves Philatelic Galleries, Inc.	81
Display Advertisement (1 page) Advertiser: Spink	82
Masthead (1 page)	83
Display Advertisement (1 page) Advertiser: Matthew Bennett Inc.	84
Table of Contents (1 page)	85
Display Advertisement (1 page) Advertiser: Schuyler Rumsey Philatelic Auctions	86
The Editor's Page	
Special Washington 2006 Issue (1 page) <i>Michael Laurence</i>	87
Guest Privilege	
United States Classics at U.S. International Exhibitions (21 pages) <i>Herbert A. Trenchard</i>	88
Prestamp and Stampless Period	
E.S. Zevely Makes Postmasters' Handstamps (12 pages) <i>James W. Milgram M.D.</i>	109
Carriers and Independent Mails	
Wiley's Washington City Despatch Post: a Sesquicentennial Commemoration (5 pages) <i>Gordon Stimmell</i>	121
Display Advertisement (2 pages) Advertiser: Nutmeg Stamp Sales, Inc.	126
1847 Period	
Plating the 5¢ 1847 Block of 16 (4 pages) <i>William H. Gross</i>	128
Display Advertisement (1 page) Advertiser: United States Stamp Society	131
1851-61 Period	
A Very Early Use of the 1¢ Circular Rate and Some Observations about eBay (3 pages) <i>Hubert C. Skinner</i>	132
1869 Period	
The Experimental Washington Postmarks of 1862 - 63 (7 pages) <i>Richard B. Graham</i>	135
Display Advertisement (1 page) Advertiser: Stephen T. Taylor	141
1869 Period	
The Pembina Post Office - Red River B.N.A. Mail Service: a Further Update (2 pages) <i>Jeffrey M. Forster</i>	142
Display Advertisement (1 page) Advertiser: Leonard H. Hartmann	143
Bank Note Period	
Resurrection of the Columbus, Ohio, Seven - Bar Grid in a Square (3 pages) <i>James Doolin</i>	144
Display Advertisement (1 page) Advertiser: Robert A. Siegel Auction Galleries, Inc.	147
Officials	
Combs' Broken 'C' at Position 28: Confirmation of a Constant Overprint Variety of the Official Stamps Specimen Second Special Printing (2 pages) <i>Alfred E. Staubus, George G. Sayers</i>	148
Foreign Mails	
Letter Mail between the United States and Germany Under the Anglo - Prussian Convention, Part Two (12 pages) <i>Dwayne O. Littauer</i>	150
Display Advertisement (1 page) Advertiser: Kristal Kare, Inc.	161
The Cover Corner	
Answers to Problem Cover in Chronicle 209 (1 page) <i>Greg Sutherland</i>	162
Problem Cover for This Issue (2 pages) <i>Greg Sutherland</i>	162
Cover Corner on Line (1 page) <i>Greg Sutherland</i>	163

In Memoriam

In Memoriam: Roy Weber, 1945 - 2005 (1 page)	164
<i>W. Wilson Hulme II</i>	
Display Advertisement (1 page) Advertiser: The Collectors Club New York	165
Display Advertisement (1 page) Advertiser: U.S. Philatelic Classics Society	165
Display Advertisement (1 page) Advertiser: Charles G. Firby	166
Index to Advertisers (1 page)	167
Classified (1 page)	167
Display Advertisement (1 page) Advertiser: H.R. Harmer, Inc.	168
Display Advertisement (1 page) Advertiser: James E. Lee	Inside Back Cover
Display Advertisement (1 page) Advertiser: Robert A. Siegel Auction Galleries, Inc.	Back Cover



OUR CATALOGS SPEAK VOLUMES...

A Shreves auction catalog says a great deal about our company. Unsurpassed attention to detail. In-depth philatelic knowledge. Award-winning marketing expertise. Record-breaking prices realized. Teamed with our famous "First Class" service for every client, Shreves has been able to attract many of the most well-known and acclaimed collections to come on the auction market. Discerning buyers and sellers alike know that high quality U.S. and foreign stamps and covers deserve a superior catalog - and auction firm - that continues to set the standard for excellence.



SHREVES
PHILATELIC GALLERIES, INC.

800 556 STAMP 800.556.7826
www.shreves.com

Dallas & New York

14131 Midway Road, Suite 1250 • Addison, Texas 75001-9829 • 972/788-2100 • FAX 972/788-2788
145 West 57th Street, 18th Floor • New York, N.Y. 10019 • 212/262-8400 • FAX 212/262-8484