

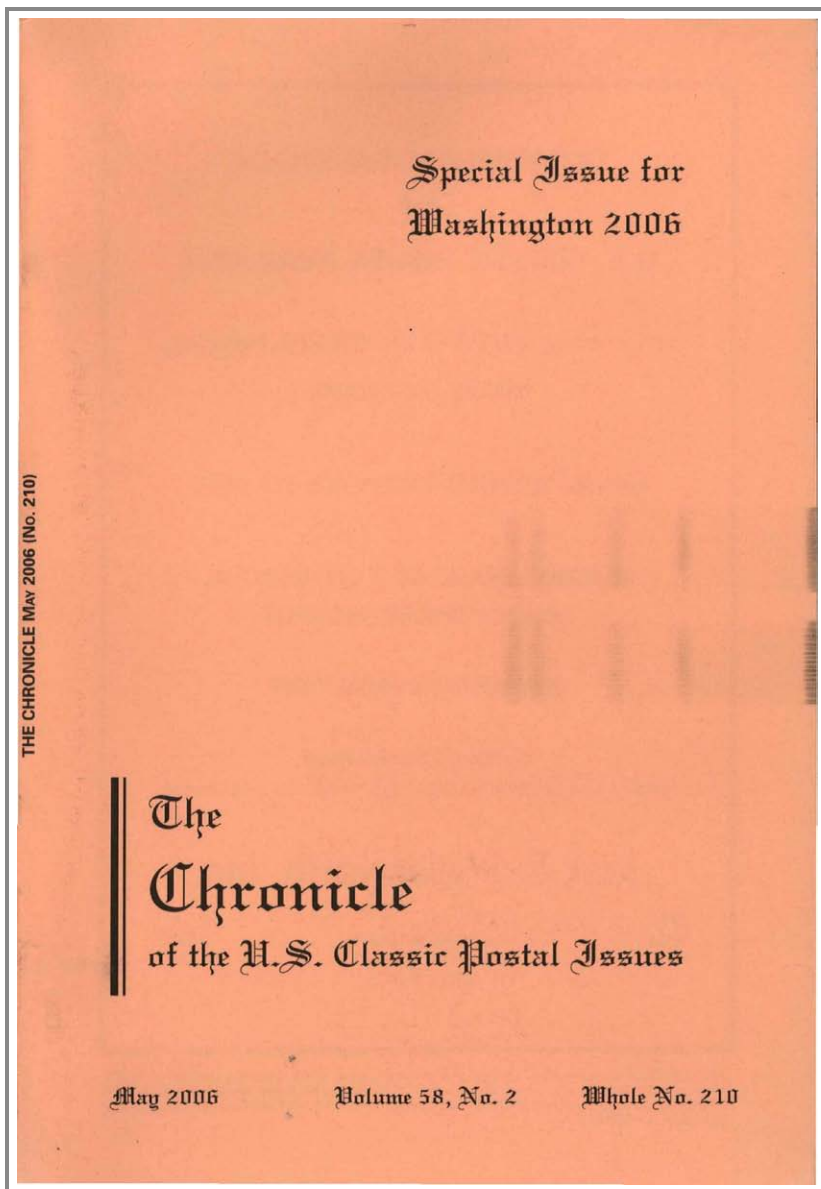


# U.S. Philatelic Classics Society

Volume: 58 Number: 2 Year: 2006 Chronicle: 210

Article: Cover Corner on Line

Author(s): Greg Sutherland



# Table Of Contents

items marked with \* cannot be viewed as an individual PDF document

[Click here to view the entire Volume: 58 No: 2 Chronicle: 210](#)

	<u>Starting Page</u>
<a href="#">Front Cover</a> (1 page)	Front Cover
<a href="#">Display Advertisement</a> (1 page) Advertiser: Jack E. Molesworth, Inc.	Inside Front Cover
<a href="#">Display Advertisement</a> (1 page) Advertiser: Shreves Philatelic Galleries, Inc.	81
<a href="#">Display Advertisement</a> (1 page) Advertiser: Spink	82
<a href="#">Masthead</a> (1 page)	83
<a href="#">Display Advertisement</a> (1 page) Advertiser: Matthew Bennett Inc.	84
<a href="#">Table of Contents</a> (1 page)	85
<a href="#">Display Advertisement</a> (1 page) Advertiser: Schuyler Rumsey Philatelic Auctions	86
The Editor's Page	
<a href="#">Special Washington 2006 Issue</a> (1 page) <i>Michael Laurence</i>	87
Guest Privilege	
<a href="#">United States Classics at U.S. International Exhibitions</a> (21 pages) <i>Herbert A. Trenchard</i>	88
Prestamp and Stampless Period	
<a href="#">E.S. Zevely Makes Postmasters' Handstamps</a> (12 pages) <i>James W. Milgram M.D.</i>	109
Carriers and Independent Mails	
<a href="#">Wiley's Washington City Despatch Post: a Sesquicentennial Commemoration</a> (5 pages) <i>Gordon Stimmell</i>	121
<a href="#">Display Advertisement</a> (2 pages) Advertiser: Nutmeg Stamp Sales, Inc.	126
1847 Period	
<a href="#">Plating the 5¢ 1847 Block of 16</a> (4 pages) <i>William H. Gross</i>	128
<a href="#">Display Advertisement</a> (1 page) Advertiser: United States Stamp Society	131
1851-61 Period	
<a href="#">A Very Early Use of the 1¢ Circular Rate and Some Observations about eBay</a> (3 pages) <i>Hubert C. Skinner</i>	132
1869 Period	
<a href="#">The Experimental Washington Postmarks of 1862 - 63</a> (7 pages) <i>Richard B. Graham</i>	135
<a href="#">Display Advertisement</a> (1 page) Advertiser: Stephen T. Taylor	141
1869 Period	
<a href="#">The Pembina Post Office - Red River B.N.A. Mail Service: a Further Update</a> (2 pages) <i>Jeffrey M. Forster</i>	142
<a href="#">Display Advertisement</a> (1 page) Advertiser: Leonard H. Hartmann	143
Bank Note Period	
<a href="#">Resurrection of the Columbus, Ohio, Seven - Bar Grid in a Square</a> (3 pages) <i>James Doolin</i>	144
<a href="#">Display Advertisement</a> (1 page) Advertiser: Robert A. Siegel Auction Galleries, Inc.	147
Officials	
<a href="#">Combs' Broken 'C' at Position 28: Confirmation of a Constant Overprint Variety of the Official Stamps Specimen Second Special Printing</a> (2 pages) <i>Alfred E. Staubus, George G. Sayers</i>	148
Foreign Mails	
<a href="#">Letter Mail between the United States and Germany Under the Anglo - Prussian Convention, Part Two</a> (12 pages) <i>Dwayne O. Littauer</i>	150
<a href="#">Display Advertisement</a> (1 page) Advertiser: Kristal Kare, Inc.	161
The Cover Corner	
<a href="#">Answers to Problem Cover in Chronicle 209</a> (1 page) <i>Greg Sutherland</i>	162
<a href="#">Problem Cover for This Issue</a> (2 pages) <i>Greg Sutherland</i>	162
<a href="#">Cover Corner on Line</a> (1 page) <i>Greg Sutherland</i>	163

In Memoriam

<a href="#">In Memoriam: Roy Weber, 1945 - 2005</a> (1 page)	164
<i>W. Wilson Hulme II</i>	
<a href="#">Display Advertisement</a> (1 page) Advertiser: The Collectors Club New York	165
<a href="#">Display Advertisement</a> (1 page) Advertiser: U.S. Philatelic Classics Society	165
<a href="#">Display Advertisement</a> (1 page) Advertiser: Charles G. Firby	166
<a href="#">Index to Advertisers</a> (1 page)	167
<a href="#">Classified</a> (1 page)	167
<a href="#">Display Advertisement</a> (1 page) Advertiser: H.R. Harmer, Inc.	168
<a href="#">Display Advertisement</a> (1 page) Advertiser: James E. Lee	Inside Back Cover
<a href="#">Display Advertisement</a> (1 page) Advertiser: Robert A. Siegel Auction Galleries, Inc.	Back Cover

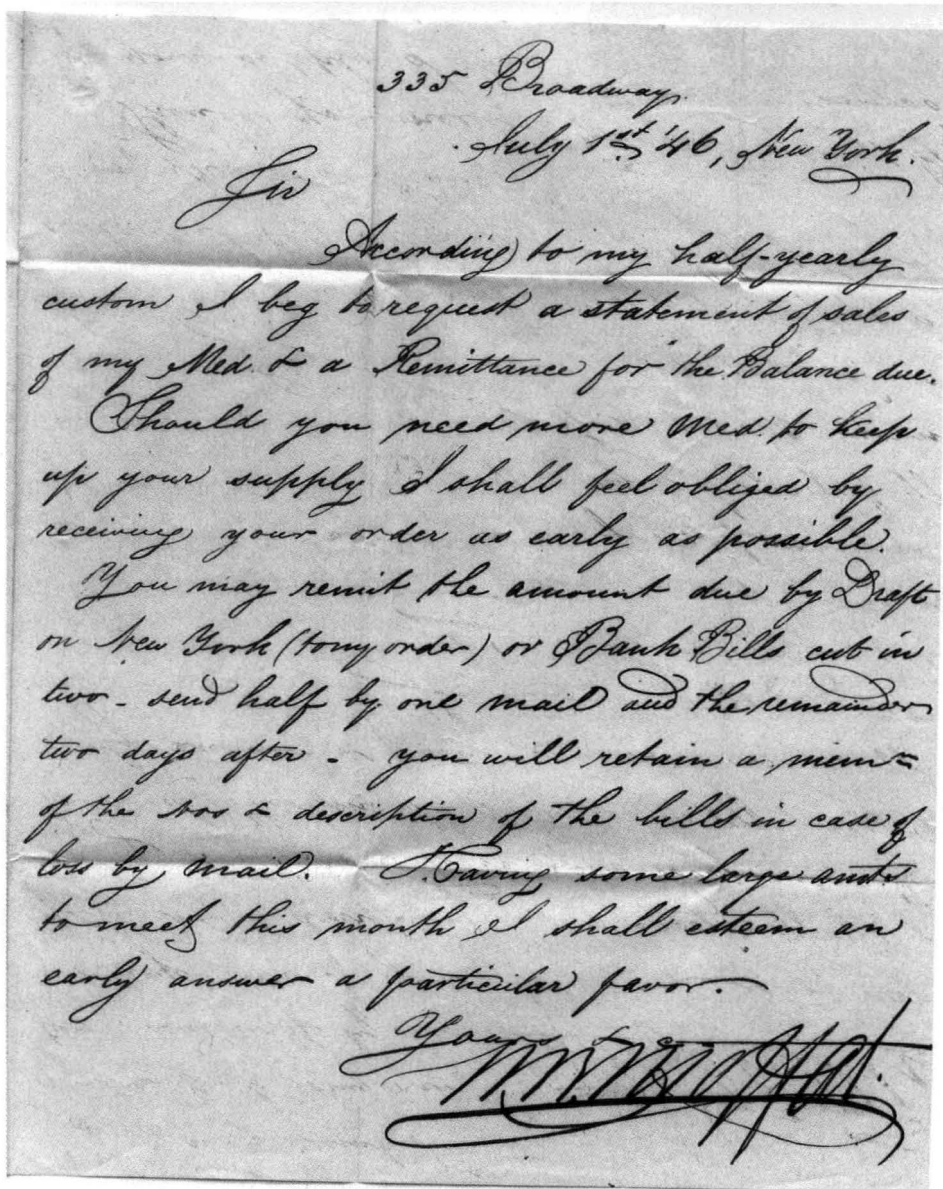


Figure 3. Contents of the problem cover shown in Figure 2.

### COVER CORNER ON LINE

In an attempt to increase member participation in this, the only interactive section of the *Chronicle*, we're experimenting with posting problem covers on the Society website. If you visit the Society's on-line site (Google "U.S. Philatelic Classics Society" or go to [uspcs.org](http://uspcs.org)) and click on the "Cover Corner" bar at the left, you'll be taken to an interesting problem cover that we've not yet featured in these pages. The site invites you to suggest your answers. If this new approach generates interest, we'll be able to take responses from the site and publish them in this section. Have a look. Get involved. ■