



U.S. Philatelic Classics Society

Volume: 58 Number: 2 Year: 2006 Chronicle: 210

Article: Display Advertisement

Advertiser: James E. Lee

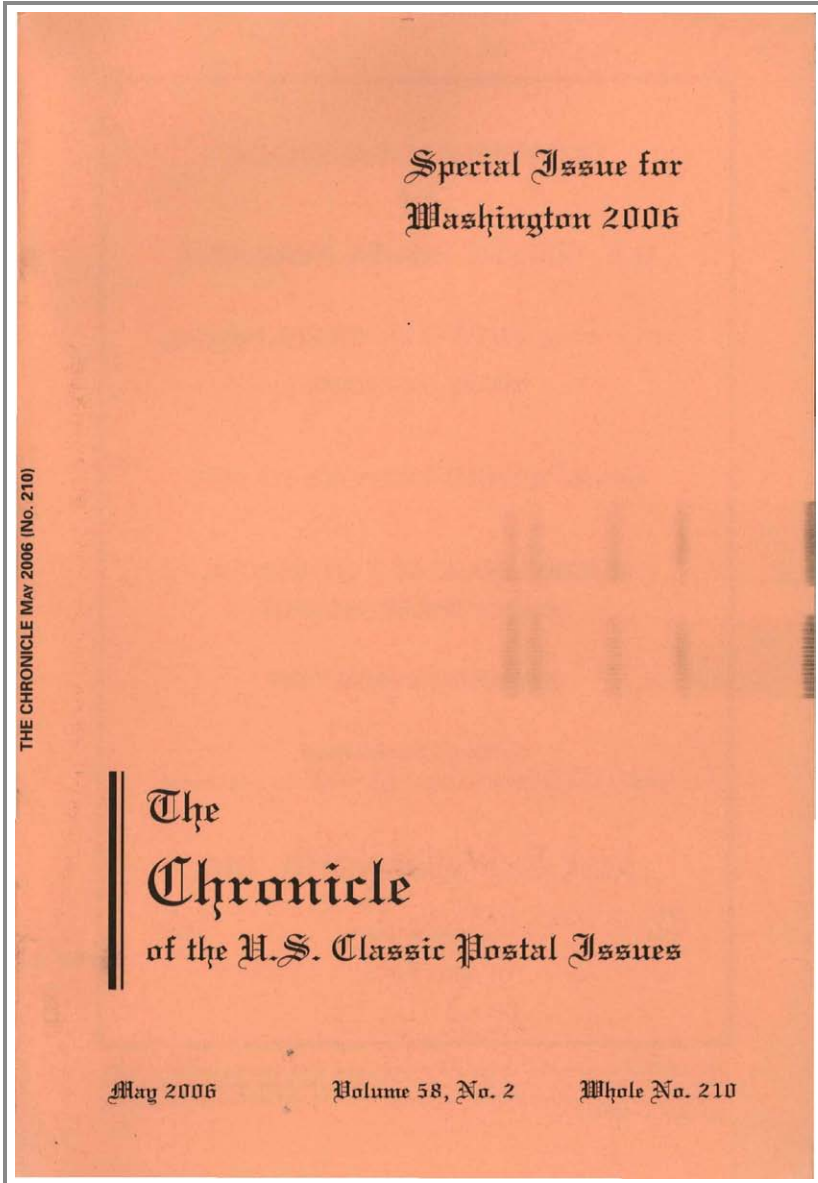


Table Of Contents

items marked with * cannot be viewed as an individual PDF document

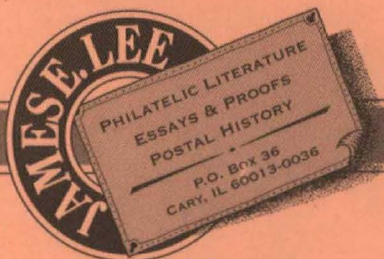
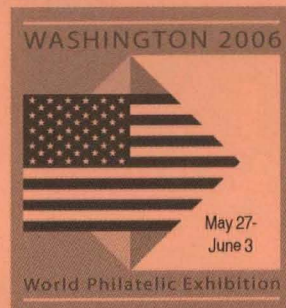
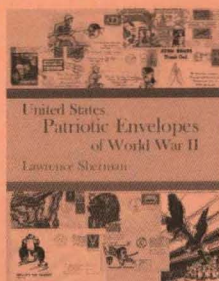
[Click here to view the entire Volume: 58 No: 2 Chronicle: 210](#)

	<u>Starting Page</u>
Front Cover (1 page)	Front Cover
Display Advertisement (1 page) Advertiser: Jack E. Molesworth, Inc.	Inside Front Cover
Display Advertisement (1 page) Advertiser: Shreves Philatelic Galleries, Inc.	81
Display Advertisement (1 page) Advertiser: Spink	82
Masthead (1 page)	83
Display Advertisement (1 page) Advertiser: Matthew Bennett Inc.	84
Table of Contents (1 page)	85
Display Advertisement (1 page) Advertiser: Schuyler Rumsey Philatelic Auctions	86
The Editor's Page	
Special Washington 2006 Issue (1 page) <i>Michael Laurence</i>	87
Guest Privilege	
United States Classics at U.S. International Exhibitions (21 pages) <i>Herbert A. Trenchard</i>	88
Prestamp and Stampless Period	
E.S. Zevely Makes Postmasters' Handstamps (12 pages) <i>James W. Milgram M.D.</i>	109
Carriers and Independent Mails	
Wiley's Washington City Despatch Post: a Sesquicentennial Commemoration (5 pages) <i>Gordon Stimmell</i>	121
Display Advertisement (2 pages) Advertiser: Nutmeg Stamp Sales, Inc.	126
1847 Period	
Plating the 5¢ 1847 Block of 16 (4 pages) <i>William H. Gross</i>	128
Display Advertisement (1 page) Advertiser: United States Stamp Society	131
1851-61 Period	
A Very Early Use of the 1¢ Circular Rate and Some Observations about eBay (3 pages) <i>Hubert C. Skinner</i>	132
1869 Period	
The Experimental Washington Postmarks of 1862 - 63 (7 pages) <i>Richard B. Graham</i>	135
Display Advertisement (1 page) Advertiser: Stephen T. Taylor	141
1869 Period	
The Pembina Post Office - Red River B.N.A. Mail Service: a Further Update (2 pages) <i>Jeffrey M. Forster</i>	142
Display Advertisement (1 page) Advertiser: Leonard H. Hartmann	143
Bank Note Period	
Resurrection of the Columbus, Ohio, Seven - Bar Grid in a Square (3 pages) <i>James Doolin</i>	144
Display Advertisement (1 page) Advertiser: Robert A. Siegel Auction Galleries, Inc.	147
Officials	
Combs' Broken 'C' at Position 28: Confirmation of a Constant Overprint Variety of the Official Stamps Specimen Second Special Printing (2 pages) <i>Alfred E. Staubus, George G. Sayers</i>	148
Foreign Mails	
Letter Mail between the United States and Germany Under the Anglo - Prussian Convention, Part Two (12 pages) <i>Dwayne O. Littauer</i>	150
Display Advertisement (1 page) Advertiser: Kristal Kare, Inc.	161
The Cover Corner	
Answers to Problem Cover in Chronicle 209 (1 page) <i>Greg Sutherland</i>	162
Problem Cover for This Issue (2 pages) <i>Greg Sutherland</i>	162
Cover Corner on Line (1 page) <i>Greg Sutherland</i>	163

In Memoriam

In Memoriam: Roy Weber, 1945 - 2005 (1 page)	164
<i>W. Wilson Hulme II</i>	
Display Advertisement (1 page) Advertiser: The Collectors Club New York	165
Display Advertisement (1 page) Advertiser: U.S. Philatelic Classics Society	165
Display Advertisement (1 page) Advertiser: Charles G. Firby	166
Index to Advertisers (1 page)	167
Classified (1 page)	167
Display Advertisement (1 page) Advertiser: H.R. Harmer, Inc.	168
Display Advertisement (1 page) Advertiser: James E. Lee	Inside Back Cover
Display Advertisement (1 page) Advertiser: Robert A. Siegel Auction Galleries, Inc.	Back Cover

It's quite possible that the greatest selection of essays, proofs, U.S. postal history & philatelic literature at the greatest stamp show in American history will be at Booth 2124. We don't think any serious collector can afford to miss this one. See you there!



James E. Lee, LLC • Phone: (847) 462-9130
Fax: (847) 462-9140 • Email: jim@jameslee.com

www.JamesLee.com