

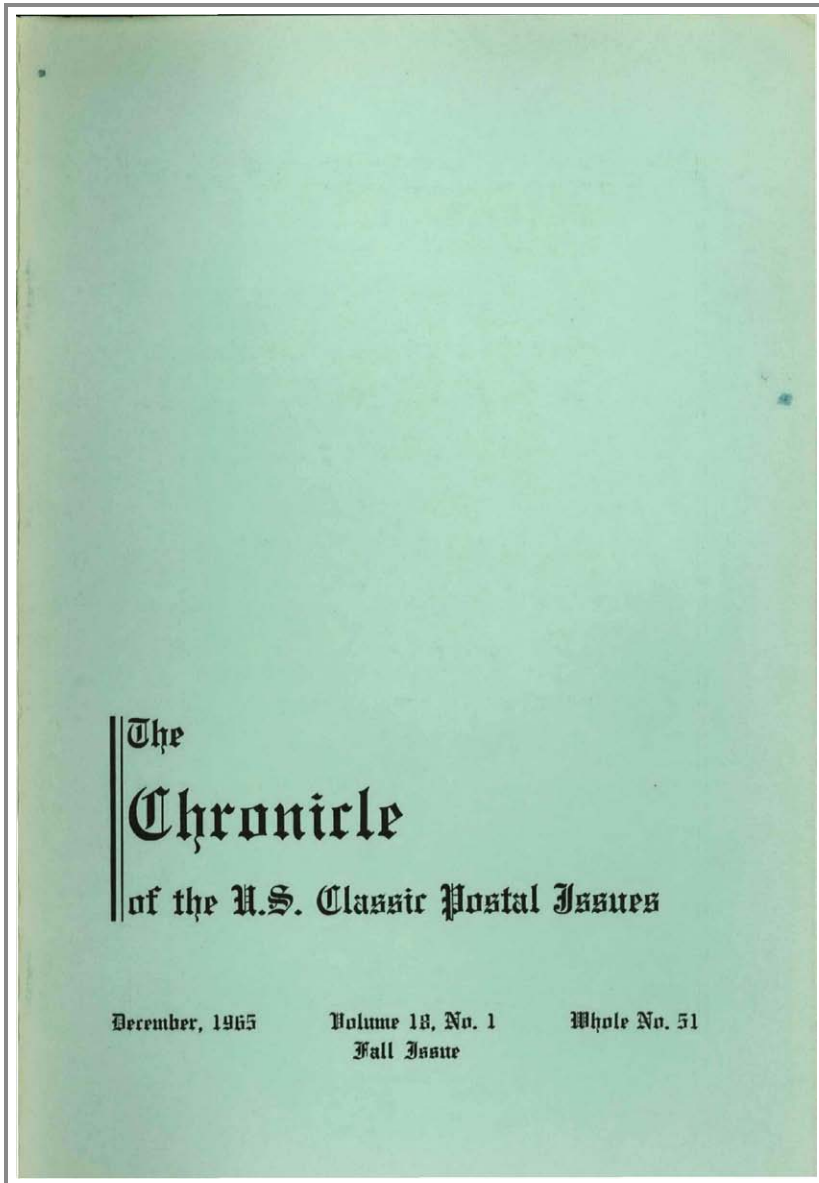


# U.S. Philatelic Classics Society

Volume: 18 Number: 1 Year: 1965 Chronicle: 51

Article: Keokuk & Rock Island River Mail

Author(s): Tracy W. Simpson



# Table Of Contents

items marked with \* cannot be viewed as an individual PDF document

[Click here to view the entire Volume: 18 No: 1 Chronicle: 51](#)

	<u>Starting Page</u>
<a href="#">Front Cover</a> (1 page)	Front Cover
<a href="#">Display Advertisement</a> (1 page) Advertiser: Robert A. Siegel, Inc.	Inside Front Cover
<a href="#">Display Advertisement</a> (1 page) Advertiser: J & H Stolow Inc	1
<a href="#">Display Advertisement</a> (1 page) Advertiser: Robson Lowe Ltd	2
<a href="#">Masthead</a> (1 page)	3
<a href="#">Table of Contents</a> (1 page)	4
1847 Period	
<a href="#">Editorial Comment</a> (1 page) <i>Creighton C. Hart</i>	5
<a href="#">1847 Covers from Arkansas</a> (3 pages) <i>Creighton C. Hart</i>	5
<a href="#">Display Advertisement</a> (1 page) Advertiser: Bureau Issues Association	7
<a href="#">Display Advertisement</a> (1 page) Advertiser: Storch, Clarence L	7
<a href="#">Display Advertisement</a> (1 page) Advertiser: Herman Herst Jr	8
1851-61 Period	
<a href="#">5ct IMPERE and PERF PAIRS on SAME COVER</a> (2 pages) <i>Tracy W. Simpson</i>	9
<a href="#">Keokuk &amp; Rock Island River Mail</a> (1 page) <i>Tracy W. Simpson</i>	10
<a href="#">Railroad Route - Agent and Station - Agent Markings</a> (3 pages) <i>W. W. Hicks</i>	10
<a href="#">Newly Reported Domestic Postal Markings</a> (3 pages) <i>Tracy W. Simpson</i>	12
<a href="#">The United States One Cent Stamp of 1857 - Type V. Shortcuts for Plating</a> (7 pages) <i>Mortimer L. Neinken</i>	14
<a href="#">Display Advertisement</a> (1 page) Advertiser: The Heffernan Press Inc	20
<a href="#">Display Advertisement</a> (1 page) Advertiser: E. N. Sampson	20
<a href="#">Display Advertisement</a> (1 page) Advertiser: Lambert W Gerber	21
<a href="#">Display Advertisement</a> (1 page) Advertiser: John A Fox	22
1861-1869 Period	
<a href="#">Editorial Comment</a> (1 page) <i>Richard B. Graham</i>	24
<a href="#">The Editor is wondering...</a> (1 page) <i>Richard B. Graham</i>	24
<a href="#">Occupation Usages</a> (4 pages) <i>Richard B. Graham</i>	24
<a href="#">Fancy Cancellations</a> (3 pages) <i>Richard B. Graham</i>	27
<a href="#">Demonetization and the 10¢ 1861 Types</a> (2 pages) <i>Richard B. Graham</i>	30
<a href="#">United States Railroad Postmarks 1861 - 1886</a> (1 page) <i>Charles L. Towle</i>	32
<a href="#">Routes and Postmarks, Connecticut - continued</a> (4 pages) <i>Charles L. Towle</i>	32
<a href="#">Display Advertisement</a> (1 page) Advertiser: New England Stamp Co.	35
1861-1869 Period	
<a href="#">Additional Routes and Postmarks</a> (1 page) <i>Charles L. Towle</i>	35
<a href="#">Display Advertisement</a> (1 page) Advertiser: Harmer, Rooke & Co., Inc.	36
<a href="#">Display Advertisement</a> (1 page) Advertiser: William A. Fox	36
<a href="#">Display Advertisement</a> (1 page) Advertiser: Edelman's	36
The Transatlantic Mails	
<a href="#">Short Paid Letters to France 1857 - 1858</a> (4 pages) <i>Melvin W. Schuh</i>	37
<a href="#">Display Advertisement</a> (1 page) Advertiser: Juliard Classics	40
<a href="#">Display Advertisement</a> (1 page) Advertiser: Simmy's Stamp Co. Inc.	40
The Cover Corner	
<a href="#">Answer to Problem Cover Presented in Issue No. 50</a> (1 page)	41

*John David Baker*

[Problem Cover for This Issue](#) (1 page)

41

*John David Baker*

[Display Advertisement](#) (1 page) Advertiser: Herbert A Klee

42

[Display Advertisement](#) (1 page) Advertiser: Jack E. Molesworth, Inc.

43

[Display Advertisement](#) (1 page) Advertiser: General Stamp Co.

44

[Display Advertisement](#) (1 page) Advertiser: H.R. Harmer, Inc.

Inside Back Cover

[Display Advertisement](#) (1 page) Advertiser: Raymond H. Weill Co

Back Cover

postoffice differed from that used in U.S. for establishing the *rate to Cuba*. Any light that can be shed on this subject, or on mails to Cuba generally, will be appreciated.—Tracy W. Simpson



Figure 2

#### KEOKUK & ROCK ISLAND RIVER MAIL

Figure 2 shows the discovery copy of the 36mm KEOKUK & RK. ISL. R.M. marking tying S5, as listed in USPM, Sched A-10. The USPM listing was tentative because of strong probability that the marking, though known on 1861-issue covers, was probably used in the 1850's. Confirmation of the correctness of this assumption is the photo sent by Mr. H. A. Meyer, showing use on May 19, 1860. This route first appears in Sept. 30, 1856, list as route 9436, 140 miles, 6 trips weekly, and similarly in the 1857 list. The route number was changed to 10903 in the 1858 list and terminus at Rock Island was changed to Davenport, Ia., across the river. This number and destination continued through 1859, 1860, and 1861, and presumably thereafter. The 1860 and 1861 lists show only three trips per week.

### Railroad Route-Agent and Station-Agent Postmarks

Compiled by W. W. HICKS, Associate Editor

Illustrations C, E, and F are described as follows in the manner employed in the C. W. Remele book:

N18½ NORTH MO. R.R. 25mm Black 1857-61  
Postal route—

St. Louis to Hudson, Mo. 168 miles 1861

The only marking so far reported ties a 3ct '57 stamp. As the road was completed to Montgomery in 1858 and to Hudson in 1859, it seems likely that the mail route was established prior to 1861, although not listed in the PMG reports before then. At Hudson it connected with the Hannibal & St. Joseph for a through route to St. Joseph, Mo. The marking is extremely rare.